

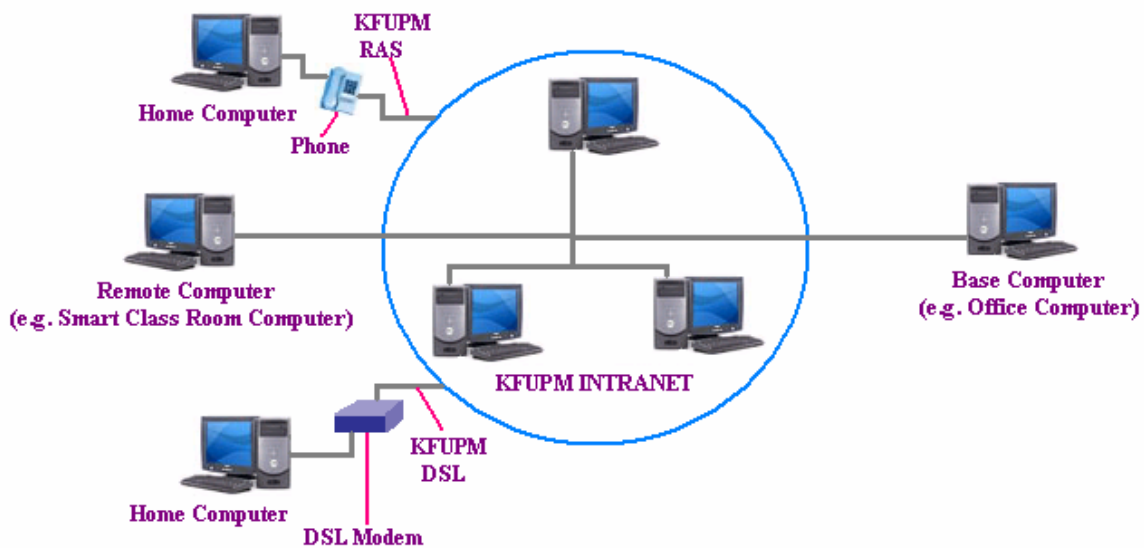
King Fahd University of Petroleum and Minerals
Information Technology Center (ITC)
Academic Technologies (ATS)



Smart Classroom Tutorial Series

Remote Desktop Connection

7th May, 2005



Explanation of Remote Desktop

With the Remote Desktop feature in Windows XP Professional, you can control your Base Computer from Remote Computer located on another office, Smart Classroom, home using RAS or DSL connection. This allows you to use the data, specialized KFUPM applications, and network resources that are on your Base Computer, without being in your office. You can also transfer files easily between your Base and Remote Computer.

Note: Turning on the Remote Desktop feature on your Base Computer is a security risk if your PC is not protected by a strong password.

Requirements for Remote Desktop:

- Windows XP Professional or Windows 2000 Advance Server installed on your office computer, or whichever computer you plan to access remotely. This computer is known as the *Base Computer*.
- A remote computer running Windows XP or a more recent version of Windows. This computer is known as the *Remote Computer*.
- A connection to the Intranet or Internet, on both Base Computer and Remote Computer. This can be a KFUPM Intranet, KFUPM dial-up connection RAS, or DSL access. A broadband (cable or DSL) Internet connection improves performance, but it is not necessary because Remote Desktop transfers only the minimal data (such as display data and keyboard data) to remotely control your host computer. Therefore, even low-bandwidth (RAS) Internet connections allow you to remotely control your Base (office) computer.

Note: Everything you do from remote access DOES really make effects on your Base Computer; and any disk operation such as creating, saving, or opening files will take place on the Base Computer, too.

Remote Desktop connection can be established between two computers as per the following list.

List of Permissible Remote Desktop Connection

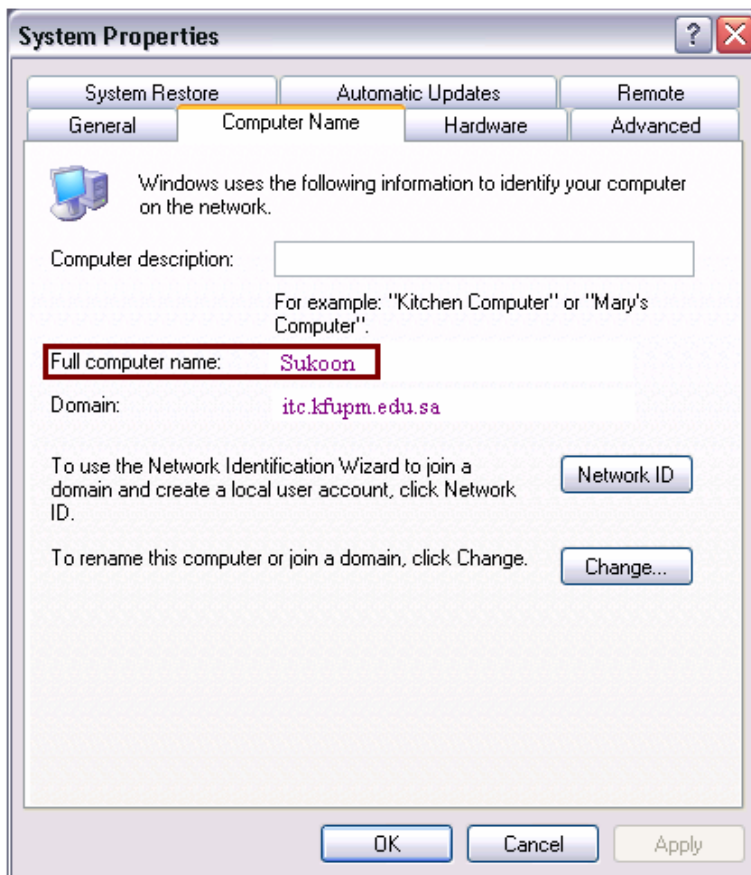
Remote (Smart Classroom) Computer	Base (Office) Computer
Windows XP Professional	Windows XP Professional
Windows XP Professional	Windows 2000 Advance Server
Windows 2000 Professional ¹	Windows XP Professional
Windows 2000 Professional	Windows 2000 Advance Server
Windows 2000 Advance Server ^{1,2}	Windows XP Professional

¹ Provided you have installed remote desktop connection software on MS Windows 2000 Professional computer and Windows 2000 Advance Server.

² To start remote desktop connection using Windows 2000 Advance Server, you must first install Terminal Service on Windows 2000 Advance Server and the software used for connecting remote desktop.

Checking the Computer Name

Right Click on **My Computer** on desktop → **Properties** → Click **Computer Name** tab. (As shown in Figure)

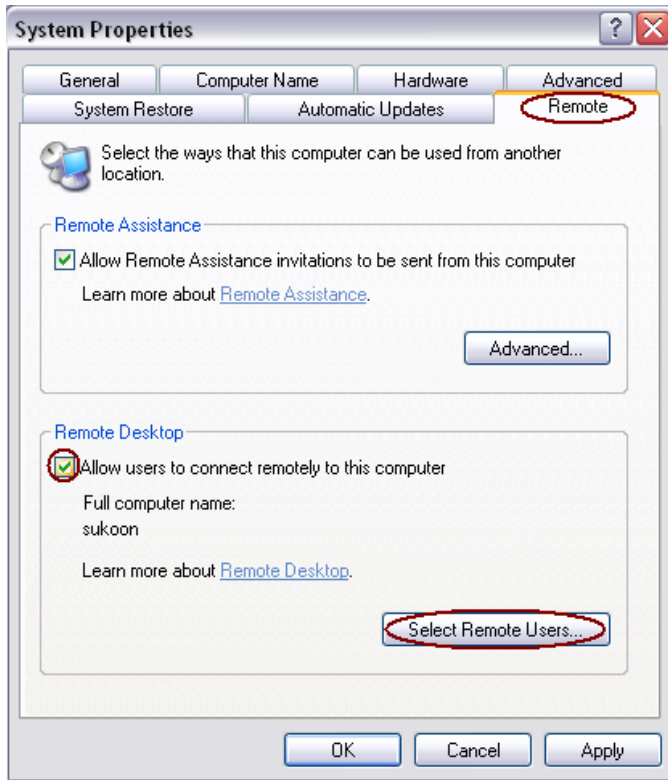


In this figure Computer name is “**Sukoon**”.

Enabling Remote Desktop Connection Procedure

Enabling remote desktop connection on Base Computer for local user account (or user with administrator privileges).

From your desktop right Click on **My Computer** → click **Properties** → **Remote** tab.

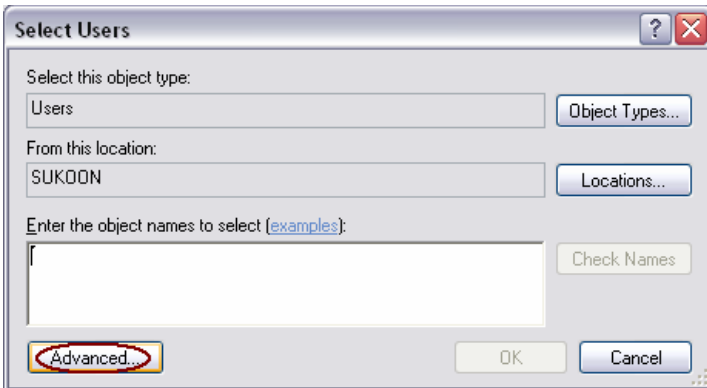


Click the “check box” to “**Allow users to connect remotely to this computer**”.

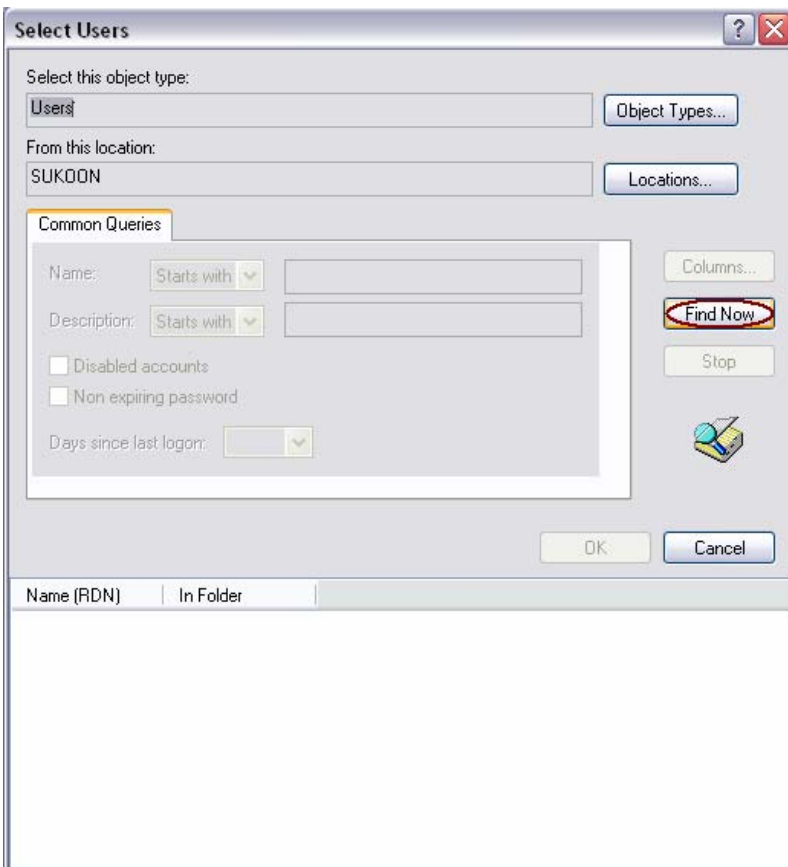
Then click “**Select Remote Users....**” button. Following window will be displayed.



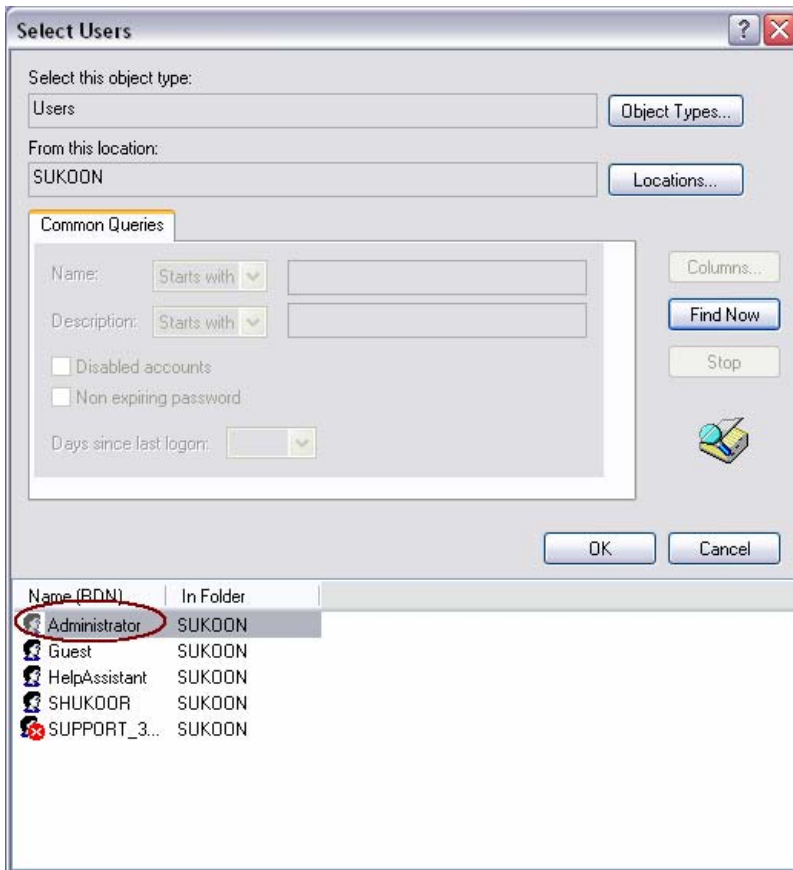
Then click “**Add**” button to add user accounts. Following window will be displayed.



Then click **“Advanced”** button to select the users. Following window will be displayed.



Then click **“Find Now”** to display user list. Following window will be displayed.



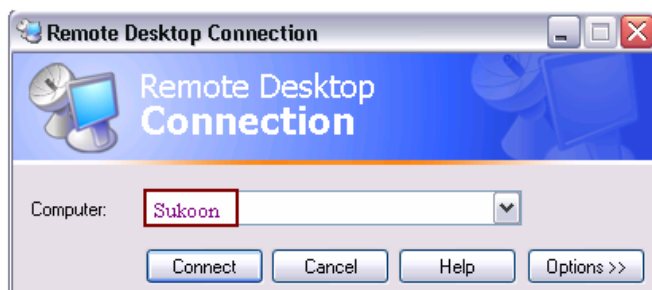
Then “select the user account and click ok” (In this case we are using administrator account you can use any user account which is the member of local administrator group [e.g. Shukoor]). Then go on clicking ok (3 times) and restart the computer.

You have successfully enabled remote desktop by following this procedure now you can access your computer from anywhere within the KFUPM campus, KFUPM RAS and KFUPM DSL Connection.

Connecting to Base Computer using Remote Desktop Connection

To connect to your Base Computer using remote desktop on Remote Computer, follow this procedure.

From Remote Computer point to **Start**→ **Programs**→ **Accessories**→ **Communication**→ **Remote Desktop (Click)**. Following window will be displayed.



Enter your Base **Computer name (e.g. Sukoon)** and click **connect**.



In the **Log on to Windows** dialog box, type your **user name, password, and domain** {Sukoon (This Computer)}, and then click **OK**.

The Remote Desktop window will open and you will see the desktop settings, files, and programs that are on your office computer. Your office computer will remain

locked. Nobody will be able to work at your office computer without a password, nor will anyone see the work you are doing on your office computer remotely.

Same procedure will be followed to connect to Base computer using Remote Desktop through KFUPM RAS and KFUPM DSL connections.

To End the Remote Session of Base Computer

To end the remote session, follow this procedure.

1. To Log off or Disconnect



From emulated Base computer desktop, Point to **Start**→ **Log off** or **Disconnect** OR

Point to **Start**→ **Windows Security**→ click **Log Off** button.

What is the difference between *Log Off* and *Disconnect* on the Base Computer?

When you **Log Off** of the Base Computer, all of your programs will exit, and your session will no longer reside in memory: Do this when you are finished running simulations on that computer.

Log off your current Windows® profile. This ends your current session and enables you to logon as another (or the same) user.

When you **Disconnect** from the Base Computer, all of your programs continue to run, but your terminal session is disconnected from the server: Do this

after you start running simulations, and are waiting for them to complete. When you logon to a Base Computer that you disconnected from, all of your programs will be as you left them.

2. To Shut Down Base Computer from emulated desktop



From emulated Base computer desktop, point to **Start** → **Windows Security** → Click **Shut Down** tab select Shut Down from the drop down menu and click **OK**.

Shut down will close all applications and shut down your computer.

Confirmation is required to avoid accidental shutdown.



Remote Desktop Connection

Feedback Form

To improve this document and our services please feel free to write us your comments and suggestions, we will be glad to hear your comments and suggestion to improve our services.

Name: _____
Department: _____
Email: _____
Telephone: _____
Fax: _____

Comments:

Suggestions:

Abdul Shukoor

Network Engineer

Telephone Office 3941

Fax 2326

Email: shukoor@kfupm.edu.sa

P.O Box 5037

ATS Manager

Information Technology Center

Telephone Office 3909

Fax 2326

Email: itc.mats@kfupm.edu.sa

P.O. Box 5037